

Sydney New Year's Eve celebration

The greatest New Year's Eve show on Earth

The screenshot shows the Sydney.com website interface. At the top left is the Sydney.com logo with the tagline 'Destination NSW'. To the right, it says 'Currently Viewing: sydney.com' and 'visitsw.com'. Below the logo is a navigation menu with 'Destinations', 'Things to do', 'Accommodation', 'Events', and 'Deals'. A search bar is located on the right with a 'SEARCH' button. A large banner features the text 'IT'S ON! IN SYDNEY' over a cityscape background. A blue button labeled 'Visit Website' is prominent. Below this, the main heading is 'Sydney New Year's Eve' with a breadcrumb trail: 'Sydney.com > Sydney Events > Sydney New Year's Eve'. To the left of the main content is a map of Sydney Harbour Bridge and surrounding areas, with a red pin 'A' marking a location. Below the map are links for 'Get directions' and 'View area map: City Centre'. To the right of the map is an address block: 'Address Various vantage points around Sydney Harbour Sydney, NSW 2000 www.sydneynewyearseve.com Phone: (02) 9265 9333'. The main content area features a large photograph of the Sydney Harbour Bridge at night, illuminated with red lights and fireworks exploding in the sky. Below the photo is a dark grey bar with the text 'Tuesday 31 December to Wednesday 1 January 2014'. At the bottom of the page, a small line of text reads: 'There's no better place to welcome the new year than in Sydney - the New Year's Eve Capital of the World.'

The Sydney New Year's Eve celebration is planned and managed by the Council of the City of Sydney in conjunction with other Government agencies and services.

The Council of the City of Sydney has been using Incom's Enterprise Risk Management software since 2004, and this software is also used to assess and manage risks at Major Events like New Year's Eve celebrations.

New Year's Eve celebration viewing locations

Although other Councils are involved, the Council of the City of Sydney takes a lead role in managing the event.

The Official Website
NYE 2013
CITY OF SYDNEY

00 DAYS 09:59:34

Shop | Media | Contact

Search

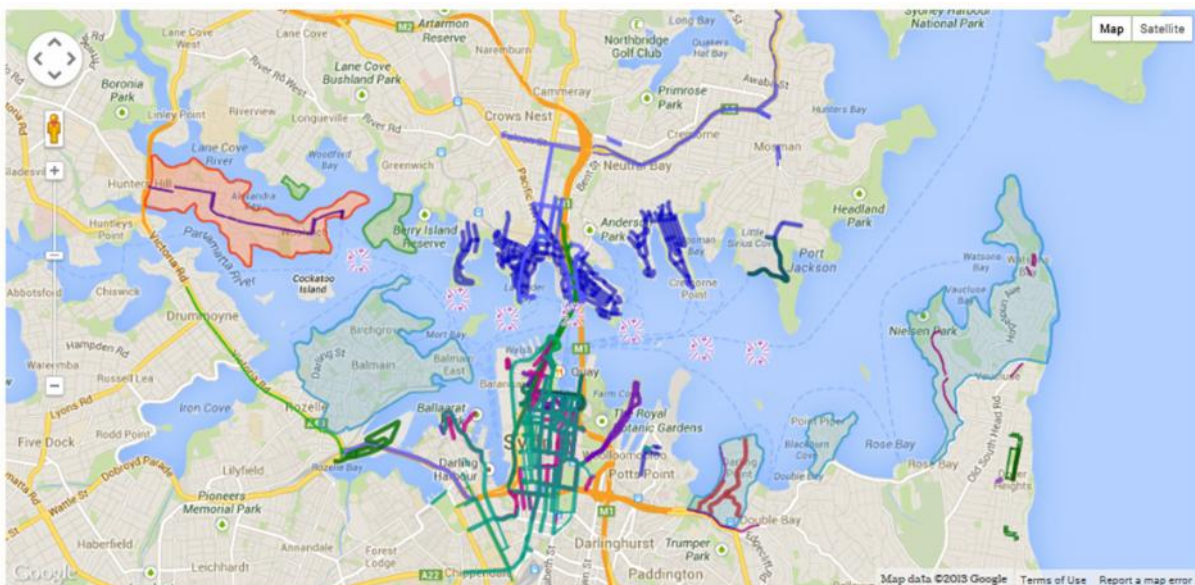
HOME VANTAGE POINTS WHAT'S ON PLAN AHEAD FIREWORKS ABOUT

LIVE VANTAGE POINT UPDATES
Find the best location to watch the fireworks and stay up to date on the latest information from vantage points across Sydney Harbour.
[READ MORE](#)

Road Closures
Plan ahead for road closures this Sydney New Year's Eve with the road closures map.
[READ MORE](#)

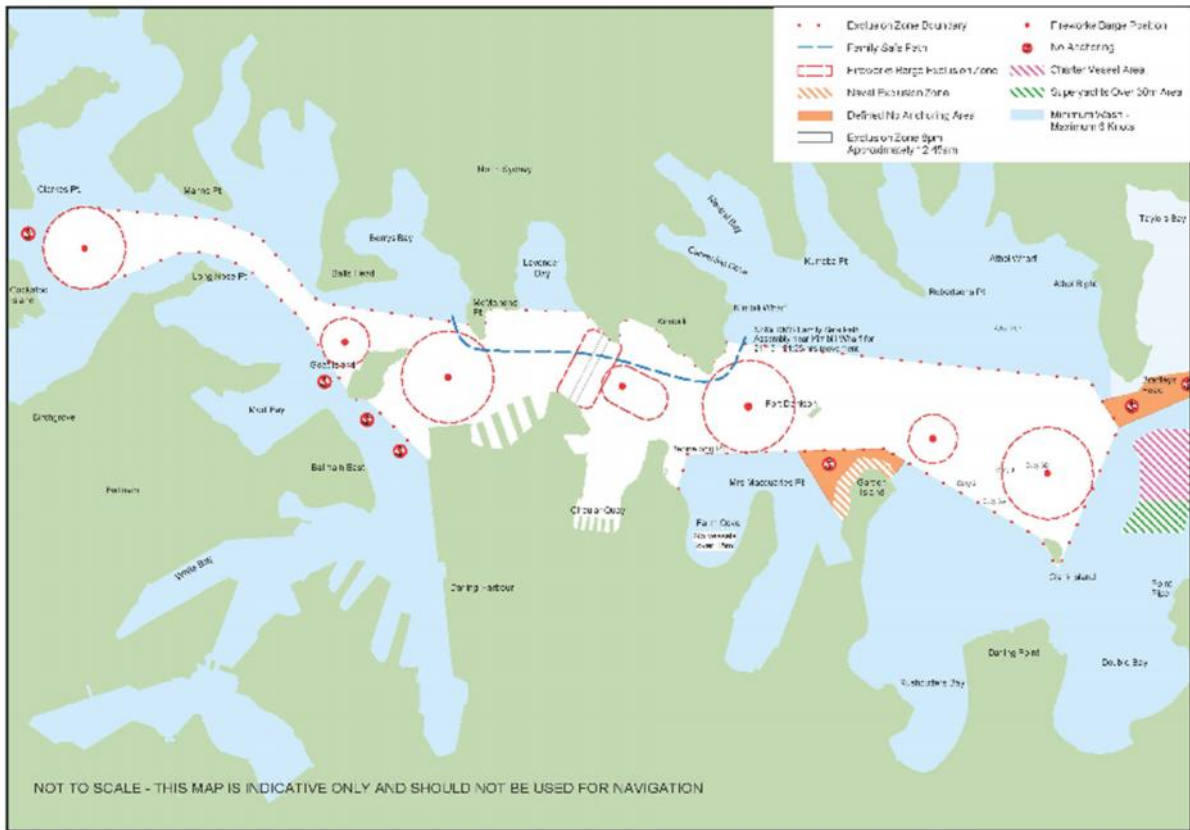
New Year's Eve celebration road closures

The Council of the City of Sydney helps plan road closures.



New Year's Eve celebration boat exclusion zones

The Council of the City of Sydney helps plan boat exclusion zones.



City of Sydney Risk Management

- About Council
- Our responsibilities
 - Areas of service
 - Permits and notifications
 - Policies
 - Fees and charges
 - Access to information
 - Customer service charter
- Governance
 - Code of conduct
 - Privacy
 - Risk management
- Forms and publications
- News and updates
- Contact us



Risk management

Risk management

The effective and conscious management of risk forms a critical component of how governance operates at the City of Sydney.

Risk management principles are embedded into the way the City works, allowing us to identify and respond to opportunities for improvement and to manage and mitigate adverse outcomes. More information about risk management is contained in the governance guide, available for download below.

Internal audit

One of the ways the City ensures good governance is through our internal audit program.

The internal audit program helps the City accomplish its objectives by bringing a systematic, objective and disciplined approach to evaluate and improve the effectiveness of risk management, control and governance processes.

Another important element of the program is its focus on identifying opportunities for continuous improvement within the City's operations.

The Audit Risk and Compliance Committee oversees internal audit, risk management and governance. The committee includes 2 members of the Council and 3 external independent members – one of whom acts as committee chair.

City of Sydney Safety



- Community services
- Community support
- Grants and sponsorships
- Participation
- Safety**
 - Alcohol and drugs
 - Domestic violence
 - Crime prevention
 - Road safety
 - Street safety



Safety

Safe City survey

Our survey about community safety concerns aims to help us deal with safety and crime issues across the local area. It is open to all residents, workers and visitors of the City.

[Complete the survey](#)

Keep safe

While Sydney is a safe place to live, work and play, we have a responsibility to increase and enhance community safety.

Alcohol and drugs

The abuse or misuse of alcohol and drugs can put individuals and the community at risk. We have a number of [initiatives and programs in place to minimise the risk for everyone](#).

Domestic violence

The 'Domestic Violence is a Crime' booklet, written with NSW Police, contains information [for people who are facing violence in their homes](#).

Crime prevention

We work on crime prevention campaigns and initiatives with NSW Police and other organisations to [continue to reduce the already-low crime rates in Sydney](#).

Road safety

The sheer volume of vehicle and pedestrian traffic in Sydney means [road safety is a major focus for the City of Sydney](#).

Street safety

Crimes 'against the person' such as assault and robbery are unavoidable in large cities but [we work hard to counter street crime and violence](#).

City of Sydney Governance

- About Council
- Our responsibilities
 - Areas of service
 - Permits and notifications
 - Policies
 - Fees and charges
 - Access to information
 - Customer service charter
 - Governance
 - Code of conduct
 - Privacy
 - Risk management
- Forms and publications
- News and updates
- Contact us



Governance

Inside this section

- Code of conduct
- Privacy
- Risk management

Our systems of governance

Good governance is at the heart of everything we do at the City of Sydney, covering the culture, processes, systems, policies and practices that we use to guide our every day operations.

Good governance creates confidence in Council. It ensures we deliver what we say we will deliver and that we act in an ethical way.

Our governance guide outlines the system of governance at the City – how we plan, monitor, review and report on our operations. It provides an insight into how decisions are made and the structures that support the City as a well-governed organisation.

A copy of the governance guide is available for download below along with our 2011 fraud and corruption internal reporting policy.

Inside this section find out more about our [code of conduct](#), [privacy practices and policies](#), and [risk management](#).

The City of Sydney will ensure its business relationships are ethical, honest, fair and consistent. The City's business dealings will be transparent and open to public scrutiny wherever possible. Read our [Business ethics statement](#).

Contacts
City of Sydney
☎ 02 9265 9333
✉ governance@cityofsydney.nsw.gov.au

City of Sydney Floodplain Management



Home > Vision > Major projects > Floodplain management

- Objectives
- Sustainability
- City wide projects
- Major projects**
- Buildings and facilities
- Floodplain management
- Parks and playgrounds
- Streets and public places
- City Transformation
- Completed projects
- On exhibition

Floodplain management

Climate control

Wet weather in early 2012 hit Sydney hard. The resulting floods caused considerable damage to public and private property and some people had to be rescued from their cars.

Plans need to be put in place to safeguard flood-prone areas from this kind of weather. It is also a legal requirement for councils to address flooding issues under the [NSW Government's Flood Prone Land Policy](#), which specifies a staged process:

1. data collection
2. flood study
3. floodplain risk management study
4. floodplain risk management plan
5. implementation of the plan.

Floodplain management plans are being put together for areas most at risk of flooding, which will look at the causes and extent of possible flooding and what can be done to help affected areas. Reducing the risk of future flooding means managing flood-prone areas properly with responsible development and drainage infrastructure.

The public is invited to view and comment on the draft plans when they are presented for exhibition. The City [publishes the dates for public exhibitions](#) and welcomes [feedback from the local community](#).

Work recommended by the plans could involve:

- refurbishing stormwater pipes and channels
- improving drainage flow paths
- creating channels to direct floodwater away from homes.

Draft Interim Floodplain Management Policy

The City of Sydney exhibited its draft Interim Floodplain Management Policy from [23 September until 28 October 2013](#). The policy, available for download below, is a responsible and forward-thinking approach to manage flooding issues, which will ensure development in the City is not at undue risk of flood and that proposals do not increase flood risk for existing properties.

Alexandra Canal

The City has prepared a draft flood study and a draft floodplain risk management study and plan for the Alexandra Canal catchment.

Green Square-West Kensington

The area is about 240 hectares in size, with the City directly responsible for 64 hectares. Paddington, Darlinghurst, Edgecliff and Rushcutters Bay are included in the plan. A mix of residential, commercial and industrial properties exist within this area.

The Green Square-West Kensington catchment flood study was completed in 2008. The documents are also available for download below. The Green Square-West Kensington Floodplain Risk Management Study and the Green Square Catchment Floodplain Risk Management Plan were [adopted by Council on 24 June 2013](#).

Johnstons Creek

This flood management plan includes the suburbs of Annandale, Camperdown, Forest Lodge and parts of Glebe and Newtown. The overall area is approximately 224 hectares and the land uses are a mix of residential, commercial, industrial and parklands.

A draft flood study has been prepared for Johnstons Creek and was reported to the [Environment Committee of Council on 3 December 2012](#). The documents are also available for download below.

The City is preparing a floodplain risk management study and plan for the Johnstons Creek catchment area.

Rushcutters Bay

Parts of Paddington, Darlinghurst and Rushcutters Bay are suburbs included within this catchment, which covers an area of about 64 hectares within the City of Sydney. The Rushcutters Bay flood study was reported to the [Environment Committee of Council on 19 August 2013](#). The documents are also available for download below.

The City will shortly commence a floodplain risk management study for this catchment.

Sydney CBD and Darling Harbour

The city centre and Darling Harbour catchments include the suburbs of Millers Point, Dawes Point, The Rocks, Sydney, Pyrmont, Ultimo, Haymarket and Surry Hills. The overall catchment area totals about 506 hectares within City's the local area. Land uses within the catchments include residential, commercial and industrial properties as well as parklands.

The Council of the City of Sydney has been using Incom's Enterprise Risk Management software since 2004, and this software is also used to assess and manage risks at Major Events like New Year's Eve celebrations.